

WeCare Organics

a product of
Denali Water Solutions

City of Ann Arbor Composting Facility
4170 Platt Road, Ann Arbor Michigan 48108

Contact Don Butynski

Cell-734-489-4518

Email- dbutynski@wecareorganics.com

2019 Products and Pricing

	<u>Retail</u>	<u>Wholesale</u>	
Compost	\$18/yd	\$12/yd >100 yds	\$8/yd >500 yds
Natural Wood Mulch	\$12/yd	\$8/yd >100 yds	\$6/yd >500 yds
Pallet Mulch	\$12/yd	\$8/yd >100 yds	\$6/yd >500 yds
Wood Chips	\$5/yd	\$5/yd	\$5/yd



WeCare Denali LLC serves as the contract operator for City of Ann Arbor's Compost Facility. WeCare Denali LLC is the exclusive distributor of WeCare Organics products. WeCare Denali LLC is a Certified member of the United States Composting Council (USCC) and manufactures high quality compost that meets USCC STA testing standards.

PRODUCT PURCHASING DIRECTIONS

Please follow the signs to the Scale House (MRF) where you will report before proceeding to the compost facility. You will then proceed to the Compost Facility where Denali staff will process your transaction and load your vehicle. **NO CASH TRANSACTIONS.** Sales from the facility are per cubic yard and loaded via CAT 938H front-end loader. Contact Don Butynski to inquire about our 30-Day Company Invoicing.

Ann Arbor residents may pick up one free cubic yard of compost and/or mulch per household. This program runs on Saturdays only, from the week of April 15th until the week of July 4th. In order to partake in the City of Ann Arbor’s Give Away Program, a valid City of Ann Arbor driver's license or a recent water bill is required. Again, the limit is 1 cubic yard of compost and/or mulch per household. Residents must visit the scale house before they begin pick up in order to verify their address. Follow the signs for the scale house after entering on Platt Road. Please note that this is a **self-loading program**, therefore each resident that partakes must bring their own shovel and containers that they may need for loading.

DROP-OFF DIRECTIONS

Please follow the signs to the Scale House (MRF) where you will report before proceeding to the compost facility. You will then proceed to the Compost Facility where Denali staff will process your transaction. **NO CASH TRANSACTIONS.** Contact Don Butynski to inquire about our 30-Day Company Invoicing.

DROP-OFF PRICING (Pricing is per cubic yard)

- Mixed Yard Waste/Brush/Pallets **(NO PLYWOOD/OSB):** \$15/cu.yd.
- Leaves – Must be clean & free of brush/wood: \$12/cu.yd.
- Wood Chips – Must be clean \$5/cu.yd.

*For quantities less than 1 cubic yard, Denali will charge \$1.00 per bag, unless the total amount of bags exceeds 1 cubic yard. Then Denali will revert to the cubic yard pricing.

Ann Arbor residents may deliver acceptable yard waste materials, at no charge, to the City of Ann Arbor Compost Center located at 4170 Platt Road Monday thru Friday, from 8 a.m. till 4 p.m. In order to drop off yard waste, a valid City of Ann Arbor driver's license or a recent water bill is required. The yard waste limit is 1 cubic yard per household.

Residents must visit the scale house before and after dropping off yard waste in order to verify material weights. Follow the signs for the scale house after entering on Platt Road. **City landlords, owners of multiple single-family properties and businesses are not eligible for this program.**

WeCare Organics

a product of
Denali Water Solutions

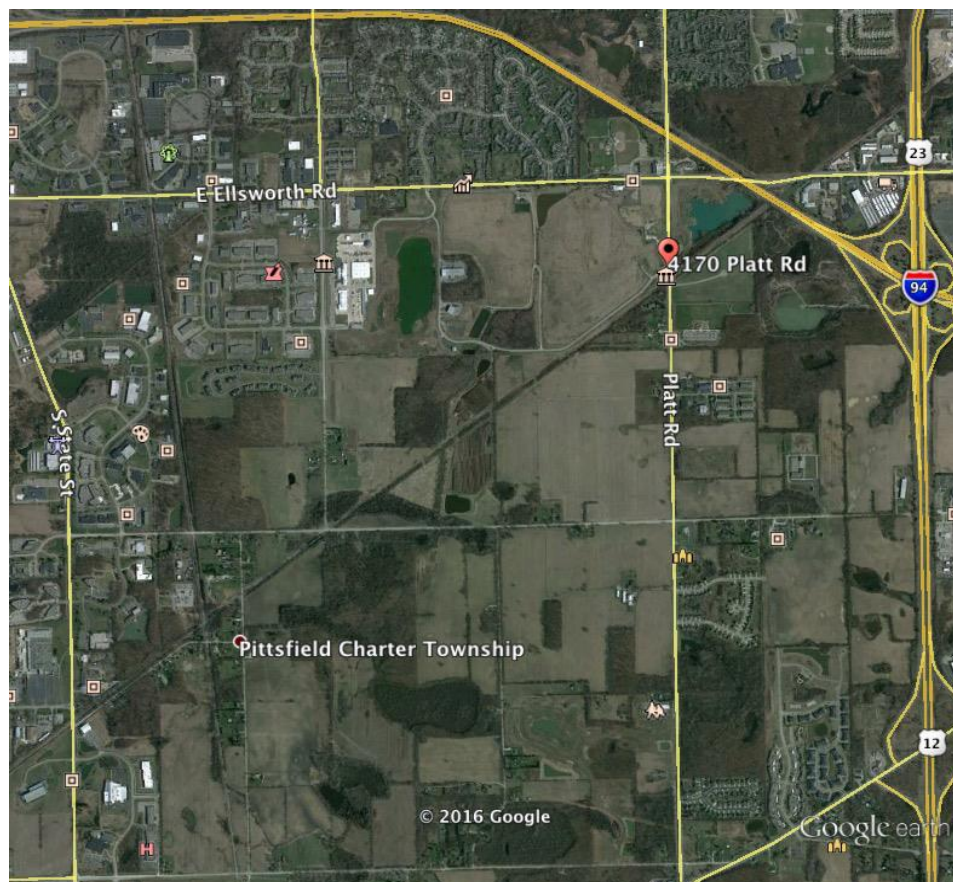
LOCATION

The WeCare Organics Composting Operation is located at the Wheeler Service Center, Located at 4170 Platt Road Ann Arbor, just south of Ellsworth Road.

HOURS OF OPERATION

Monday-Friday; 7am-4pm

Saturdays: April –May- June: 7am-Noon



Google earth

miles 1
km 2

